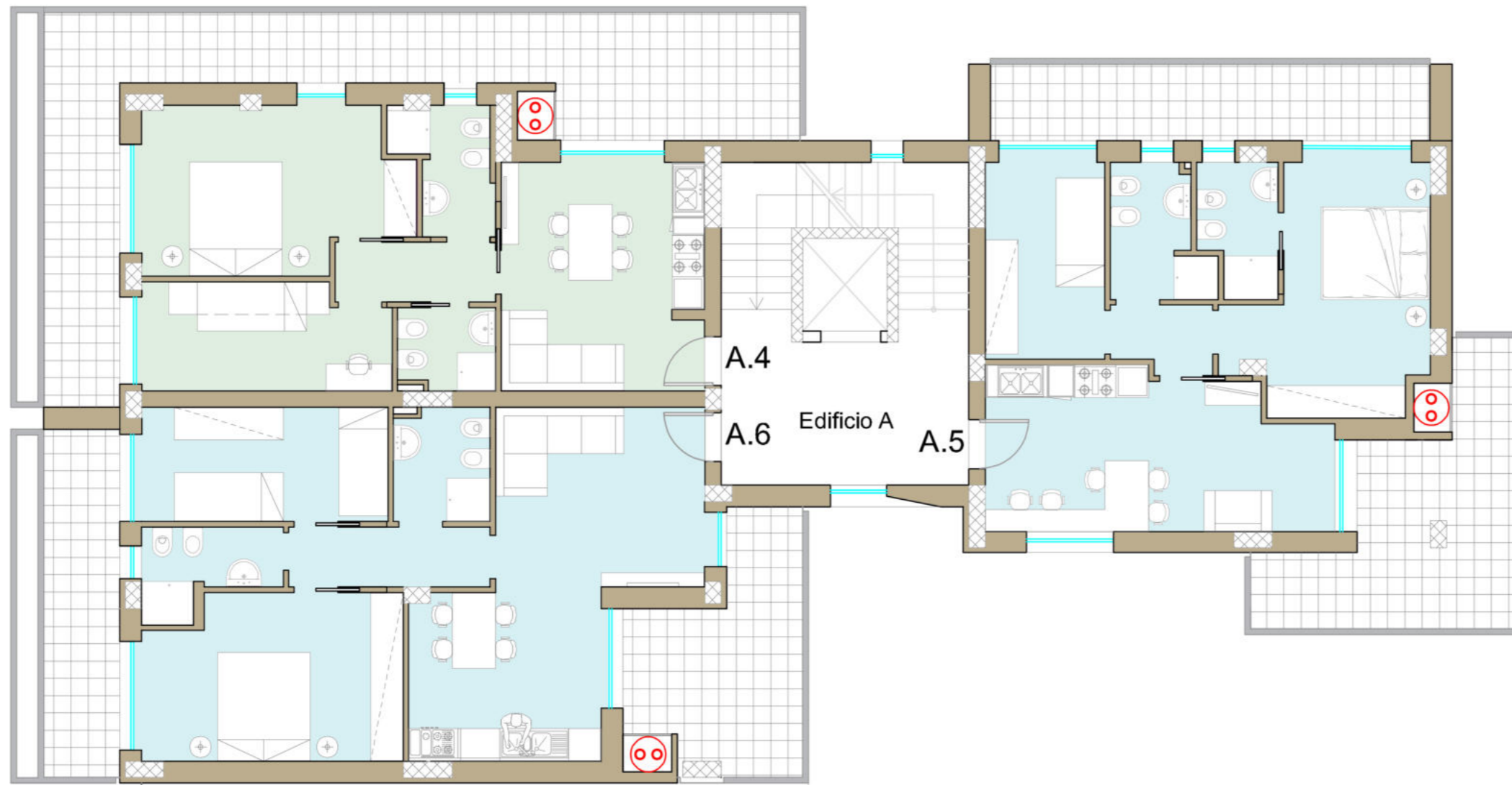
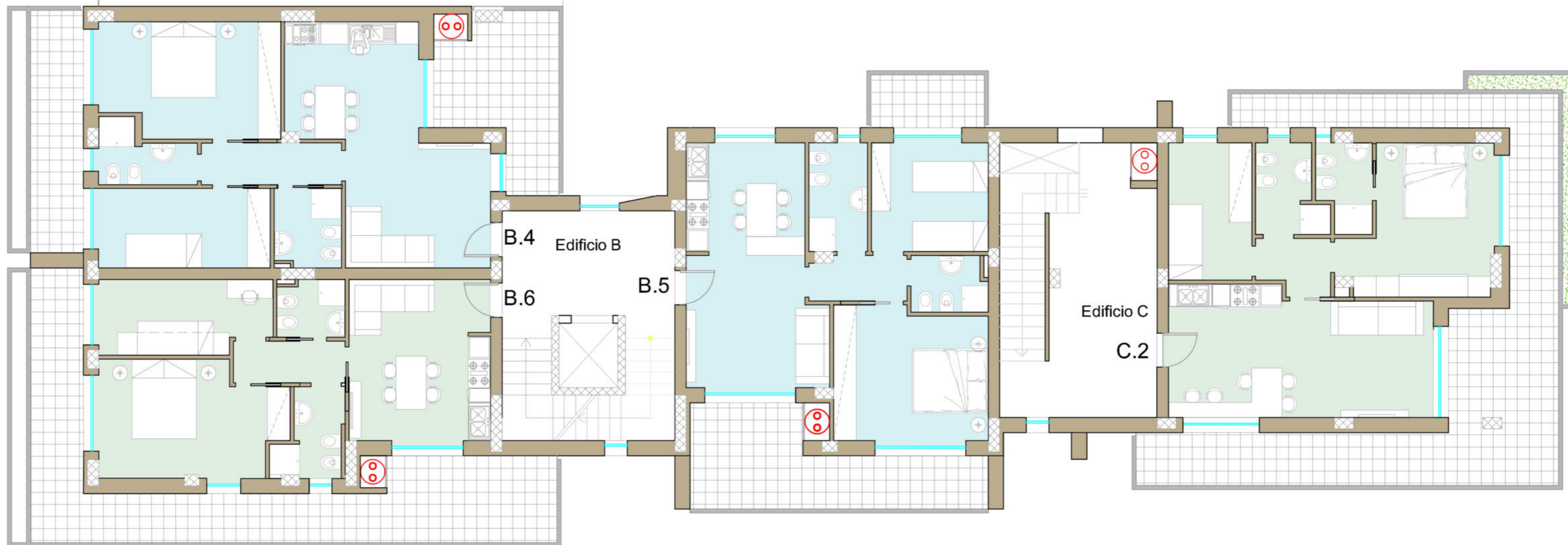


# PIANTA PIANO PRIMO

GRUPPO OLIVIERI  
IMMOBILIARE



passaggio pedonale coperto  
al piano terra



A.4 - Sup. Lorda mq. 59,40 - Terrazzi mq. 35,00

A.5 - Sup. Lorda mq. 63,60 - Terrazzi mq. 29,70

A.6 - Sup. Lorda mq. 72,20 - Terrazzi mq. 23,40

B.4 - Sup. Lorda mq. 72,20 - Terrazzi mq. 23,30

B.5 - Sup. Lorda mq. 69,30 - Terrazzi mq. 21,70

B.6 - Sup. Lorda mq. 59,60 - Terrazzi mq. 34,60

C.2 - Sup. Lorda mq. 68,60 - Terrazzi mq. 43,20

